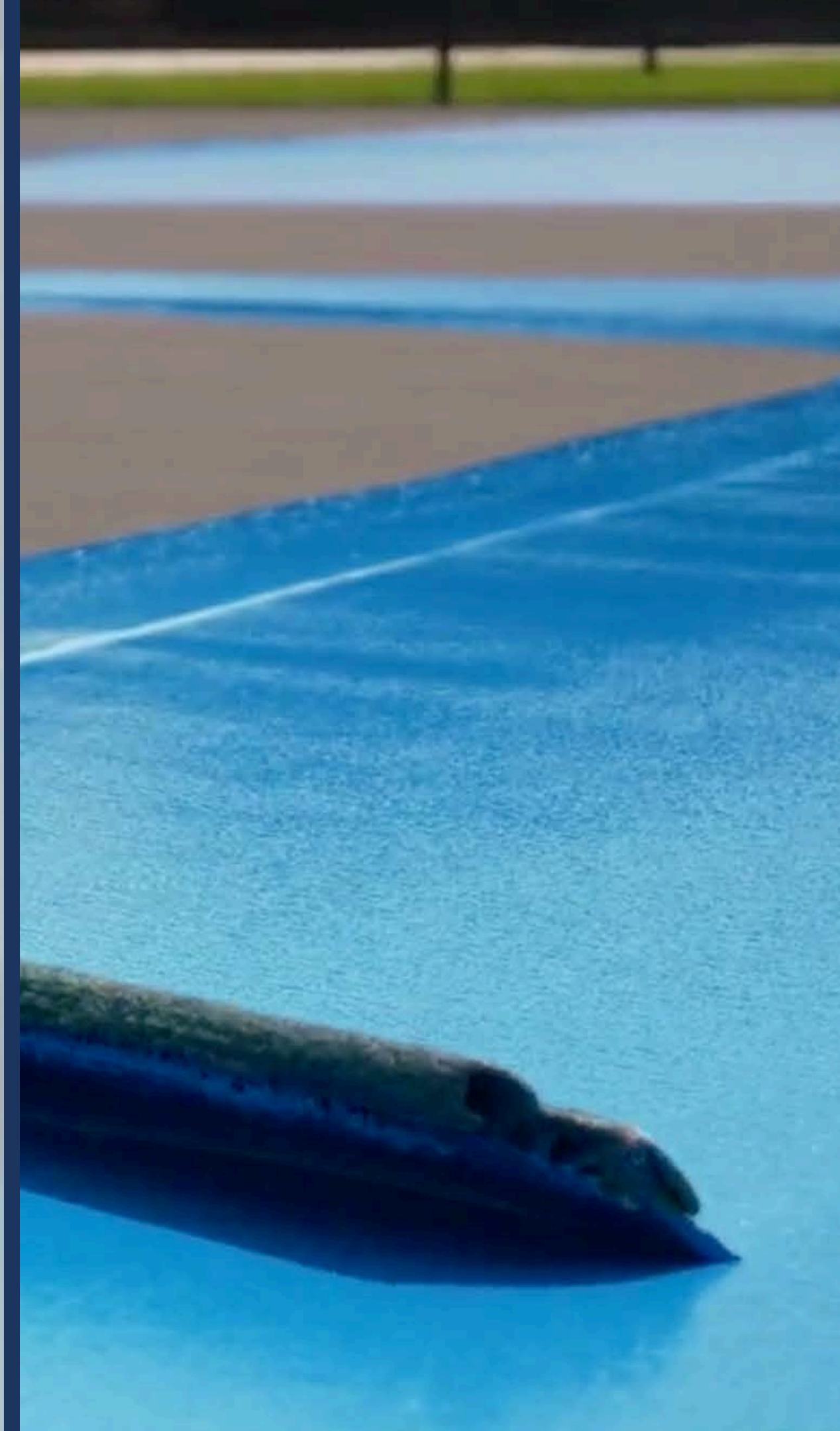




**SURFACES THAT PERFORM.
SOLUTIONS THAT GO FURTHER.**

| ATSPORTS.COM



ABOUT AT SPORTS

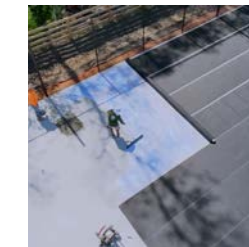
Since 1995, AT Sports has been a leading manufacturer of high-performance, durable sports surfacing solutions.

We specialize in engineering innovative products that ensure every game is played on the best possible foundation.

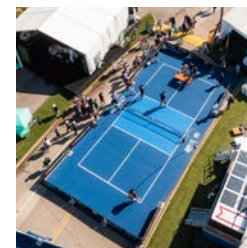
PRODUCTS FOR ANY COURT PROJECT



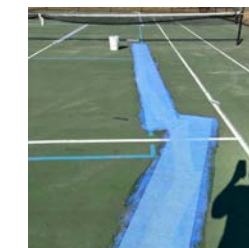
ACRYTECH
SPORTS COATINGS



CUSHION X
CUSHION SPORTS SURFACES



ROLLY
PORTABLE SPORTS SURFACES



FAULTLINE
CRACK REPAIR

Member of the
ITF
Foundation



OFFICIAL SURFACE
INTENNSE



189





CUSHION
PICKLEBALL COURTS



OFFICIAL SURFACE



PICKLEBALL TOUR

Since 2020

Donald Young
AT Sports Sponsored Athlete

Meghan Dizon-Sheehan
AT Sports Sponsored Athlete

ACRYTECH

SPORTS COATINGS

DIVISION OF
AT
SPORTS

**OUR ACRYTECH LINE OF PRODUCTS FEATURE TOP-OF-THE-LINE
SPORTS SURFACE COATINGS AND MATERIALS**



COATINGS



PRIMERS & SEALERS



& MUCH MORE

BUILT TO LAST, DESIGNED TO PERFORM

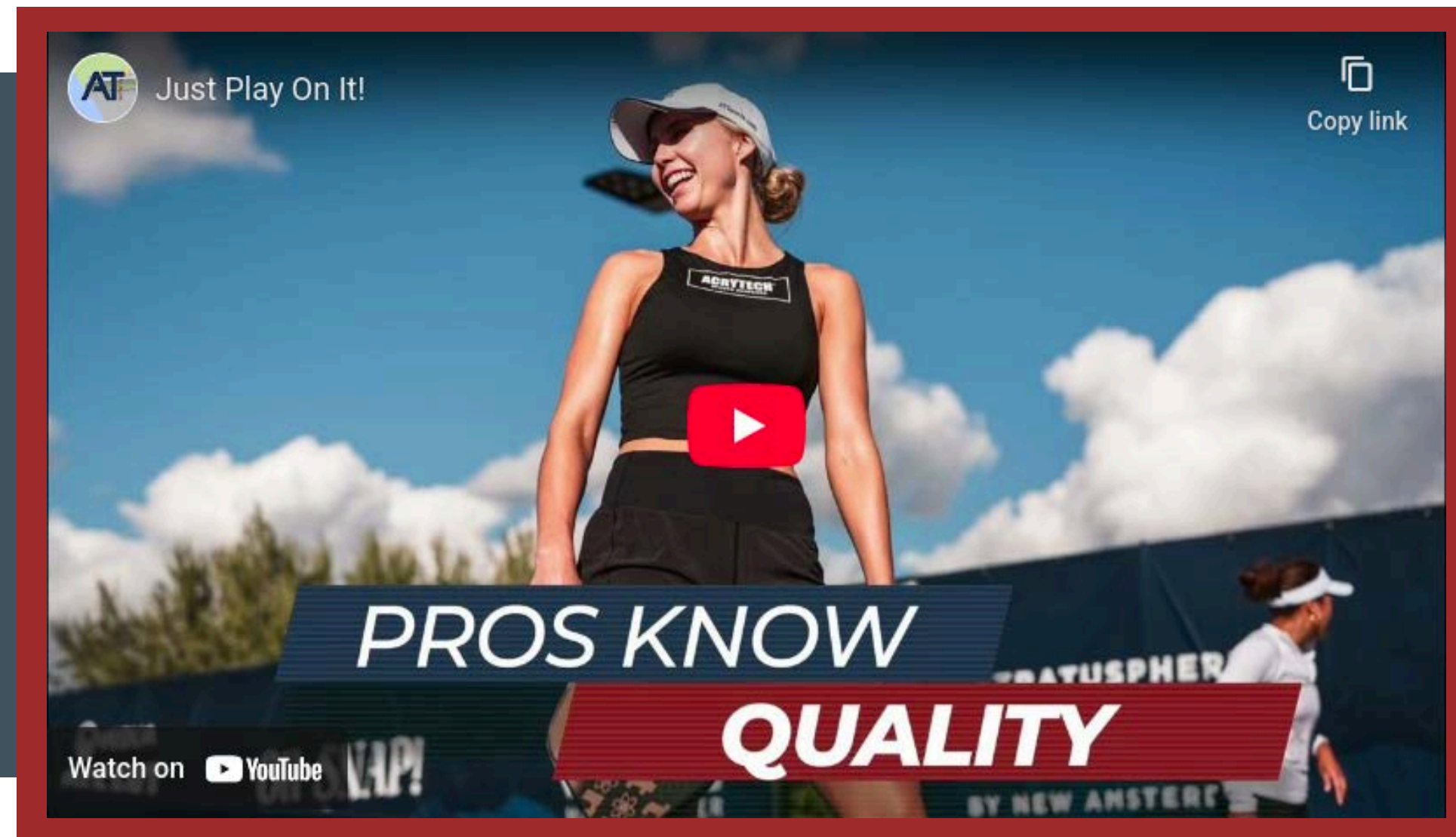
ACRYTECH
SPORTS COATINGS

ULTRA-DURABLE & WEATHER-RESISTANT

Resists surface wear over time. Its flexible formulation maintain vibrant color & structural integrity season after season

INSTALLER-FRIENDLY & COST EFFICIENT

Comes in concentrated form for flexible mixing and Smooth application with reliable coverage



CONSISTENT PLAYABILITY

Provides balanced texture and traction, delivering optimal ball bounce, spin control, and foot grip

ECO-CONSCIOUS & PLAYER-SAFE

Water-based, low-VOC formula contains no hazardous materials like lead, asbestos, or PCBs

AT AT SPORTS, WE BELIEVE COLOR IS MORE THAN JUST A DESIGN CHOICE—**IT'S AN EXPERIENCE.**
OUR ADVANCED TECHNOLOGY ENSURES OUR COLORS STAY BRIGHT, VIVID, AND CONSISTENT.

PLAYER'S CHOICE COLORS



SPECIALTY COLORS



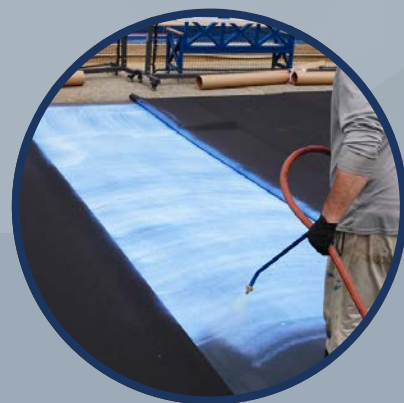
Digital displays can alter how colors appear from one screen to another. For true accuracy, please request a draw down from your installer or AT Sports Account Manager. Samples are provided free of charge; only shipping costs apply.



CUSHIONX DELIVERS UNMATCHED IMPACT RESISTANCE AND EXCEPTIONAL DURABILITY, ENSURING THAT ATHLETES CAN ENJOY A SURFACE BUILT TO ENDURE THE DEMANDS OF INTENSE ACTIVITY.



CUSHION MATS



ADHESIVES & SEALERS



SQUEEGEE CUSHION



CUSHIONX EXTREME

WHERE PRECISION MEETS PERFORMANCE



EXCEPTIONAL IMPACT RESISTANCE

Force reduction up to 15%
compared to traditional
surfaces

MULTIPLE THICKNESS OPTIONS

Thickness options in 4mm,
6mm and 8mm



FASTER INSTALLATION

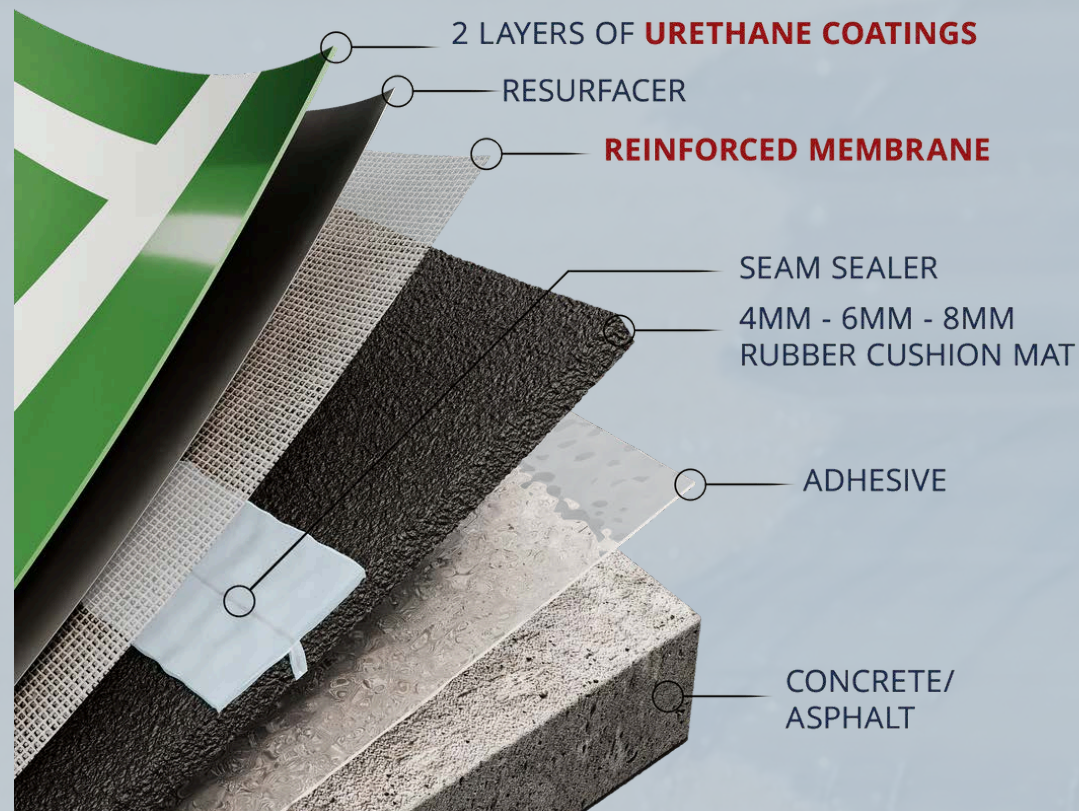
Delivers an installation
speed that is three times
faster than traditional
methods

MANUFACTURED BY AT SPORTS

A commitment that
guarantees consistent
quality and performance
with every product

THREE DISTINCT CUSHIONX COMPOSITION LEVELS HAVE BEEN EXPERTLY CRAFTED TO CATER TO DIVERSE AND SPECIALIZED USAGE NEEDS.

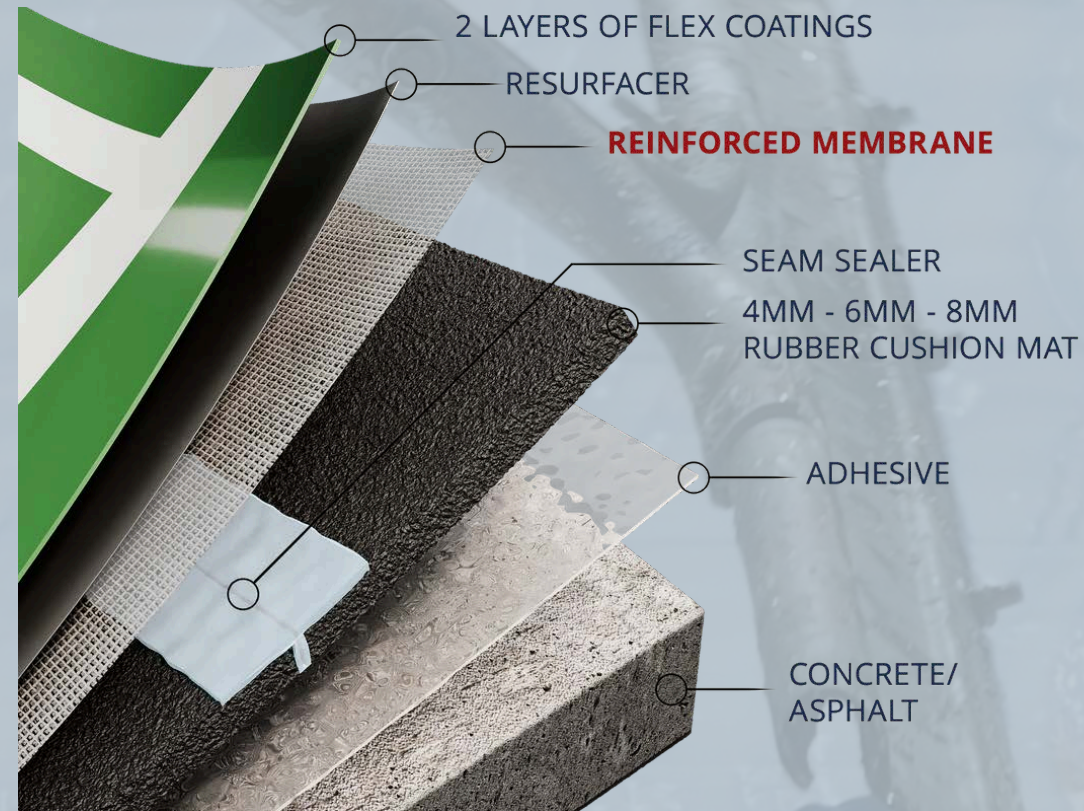
LEVEL 3



CLUB LEVEL & PRO TOURNAMENT USAGE

Designed for top-tier performance, Level 3 enhances Level 2 with three layers of urethane flex coatings. This construction withstands heavy use while offering exceptional impact absorption and comfort.

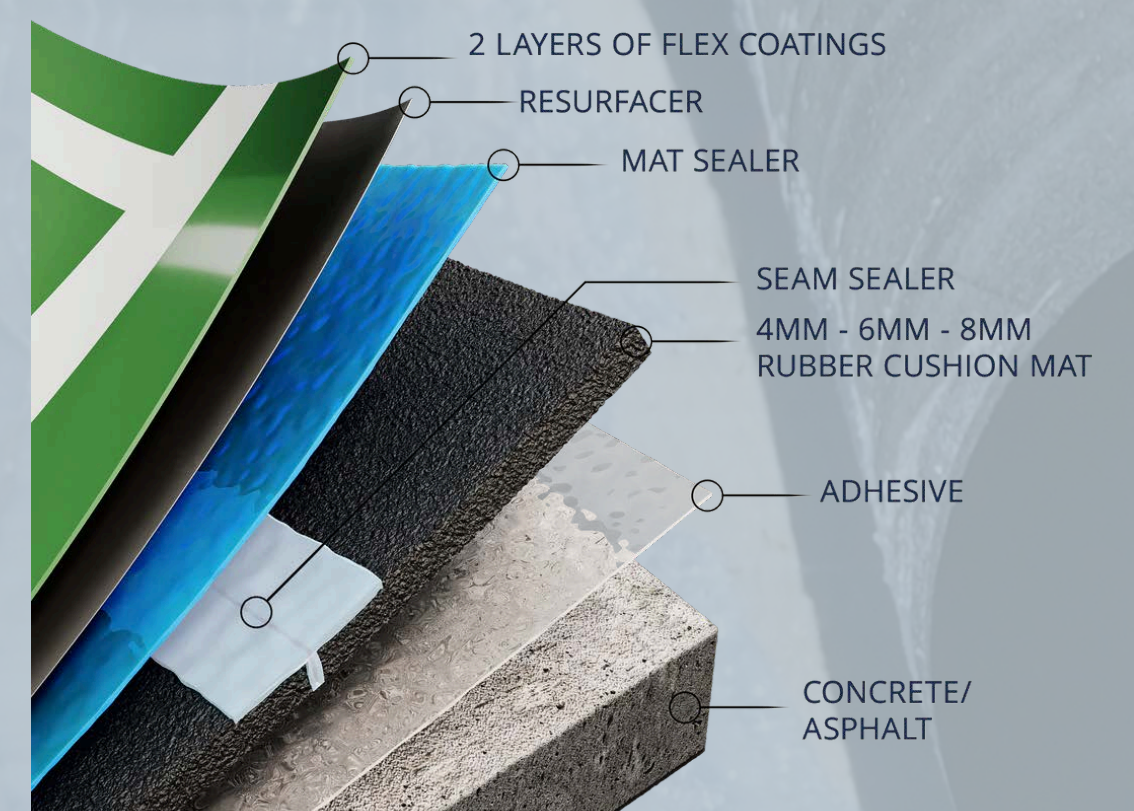
LEVEL 2



LIGHT & MODERATE COMMERCIAL USAGE

Crafted for superior resilience, Level 2 enhances the capabilities of Level 1 by incorporating an extra reinforced membrane layer to meet the demands of high-traffic environments.

LEVEL 1



RESIDENTIAL & LIGHT COMMERCIAL USAGE

Ideal for homes and light-use courts, Level 1 includes a 4mm, 6mm, or 8mm cushion mat with three layers of flexible coatings offering durability and comfort for recreational play.

EXTREME DAMAGE MEETS EXTREME SOLUTIONS



OVERLAY SYSTEM FOR DAMAGED COURTS

Free floating system engineered to be installed directly over cracked or deteriorated courts with no tear-out required.

REINFORCED SEAM & PERIMETER BONDING

Seams are reinforced and the system is secured at the perimeter to manage movement and reduce stress.



6MM CUSHIONED PERFORMANCE LAYER

Optimized thickness for superior impact absorption, player comfort, and consistent ball response.

20-YEAR CRACK-FREE WARRANTY

A commitment that guarantees long-term durability backed by proven materials and design

FAULTLINE

CRACK REPAIR

DIVISION OF
AT
SPORTS

OUR FAULTLINE LINE OF PRODUCTS FEATURE MULTIPLE SOLUTIONS FOR
MAINTAINING THE QUALITY AND PERFORMANCE OF YOUR COURTS.



SPORT PATCH



CRACK FILLERS



SB GLUE



CRACK REPAIR KIT

SEAMLESS REPAIRS WITH LASTING STRENGTH

FAULTLINE

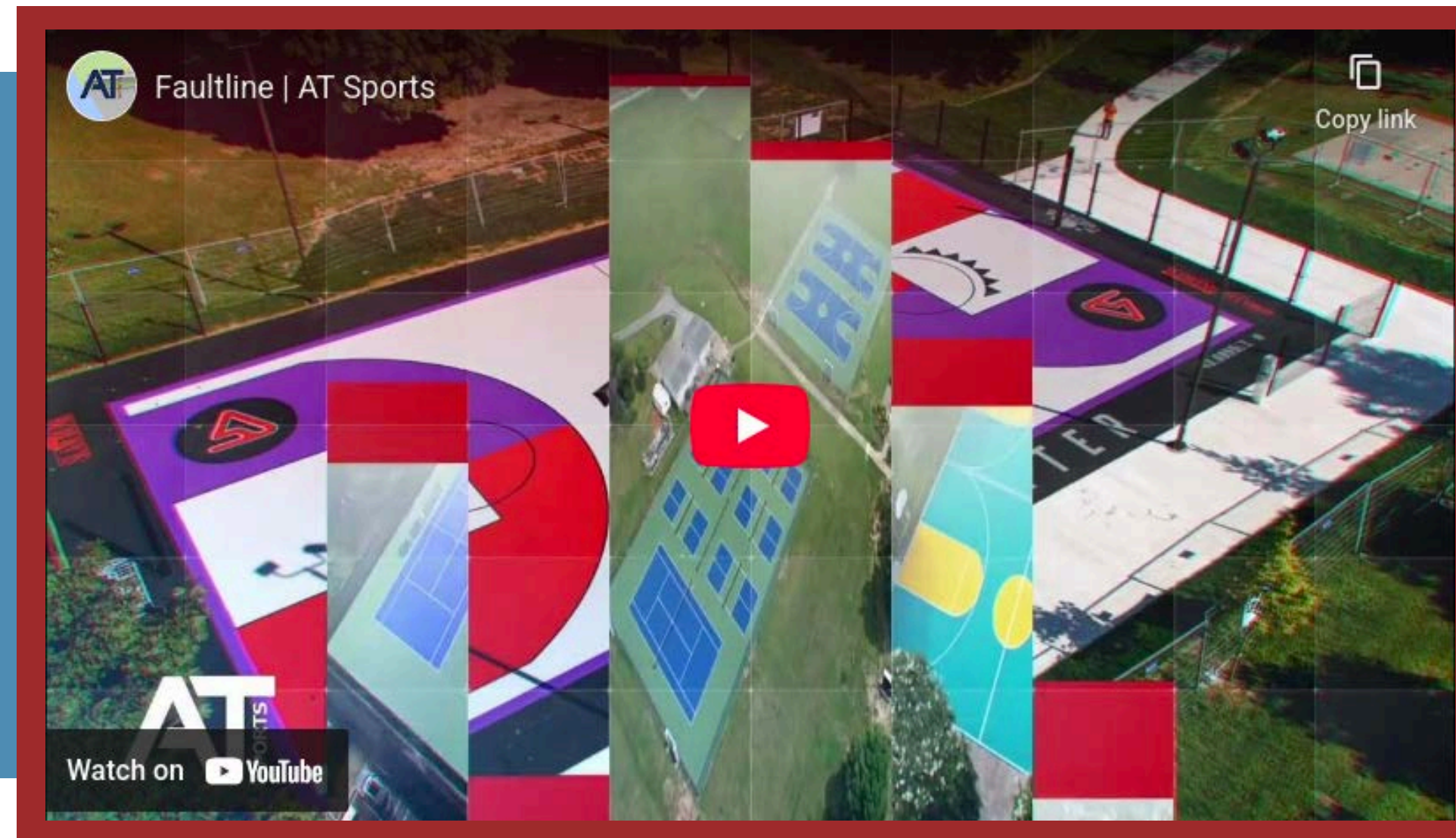
CRACK REPAIR

FLEXIBLE, HIGH-BOND CRACK FILLER

Withstands movement and temperature shifts without failing or reopening

PROPRIETARY CRACK REPAIR KIT

Thinnest, permanent, fully adhered system currently on the market



LONG-LASTING DURABILITY

Formulated to resist cracking, shrinking, or delaminating over time - offering extended surface life with minimal maintenance

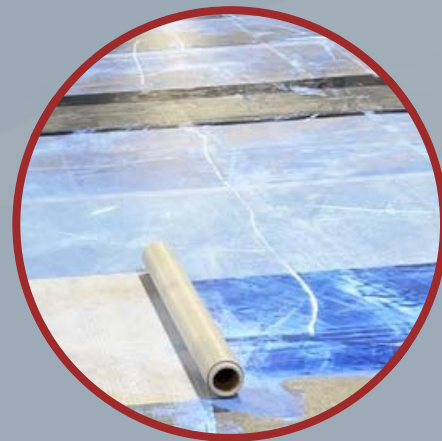
WEATHER-RESISTANT & UV-STABLE

Withstands outdoor exposure and fluctuating conditions—ideal for courts in any climate.

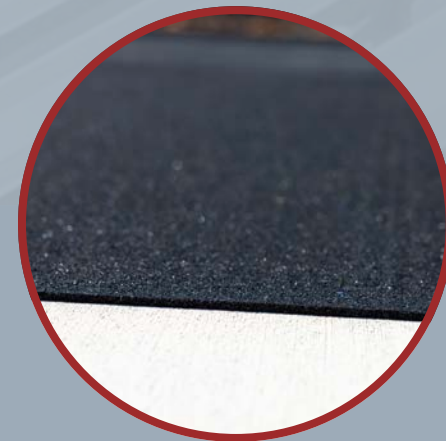
ROLLX
PORTABLE SPORTS SURFACES

DIVISION OF
IAT
SPORTS

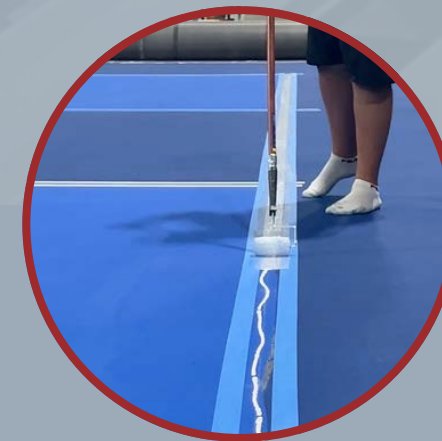
ROLLX IS A PREFABRICATED SPORTS SURFACE THAT TRANSFORMS ANY FOUNDATIONAL SURFACE INTO A HIGH-PERFORMANCE PLAYING COURT



REINFORCED MEMBRANE



CUSHION MAT



FLEX COATINGS

DESIGNED FOR VERSATILITY AND CONVENIENCE

ROLLX
PORTABLE SPORTS SURFACES

PREMADE & CUSTOMIZABLE

A fully personalized sport surface featuring your choice of colors and logo(s) to meet your branding needs

EASY SETUP

With easy installation and removal, you can set up a professional-grade playing area in no time.



VERSATILITY

Engineered to perform in both indoor and outdoor settings and endorsed by the PPA

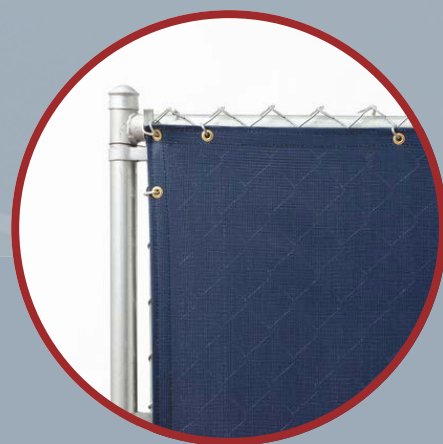
PROPRIETARY REINFORCED OVERLAY

A unique reinforced overlay that can be applied to concrete, asphalt, or any level underlying surface



WINDSCREENS

OUR WINDSCREENS FEATURE CUSTOMIZABLE OPTIONS THAT IMPROVE PRIVACY, REDUCE WIND INTERFERENCE, & CREATE A PROFESSIONAL ATHLETIC ENVIRONMENT



8 OZ VINYL COATED POLYESTER



10 OZ VINYL

ENGINEERED TO BOOST ON-COURT PERFORMANCE



FOR INDOOR & OUTDOOR

Our Windscreens are engineered to perform indoors and outdoors - perfect for gyms, stadiums, courts, and facility perimeters.

BUILT TO LAST

Delivers long-term performance with reinforced construction and premium fabrics designed for strength.



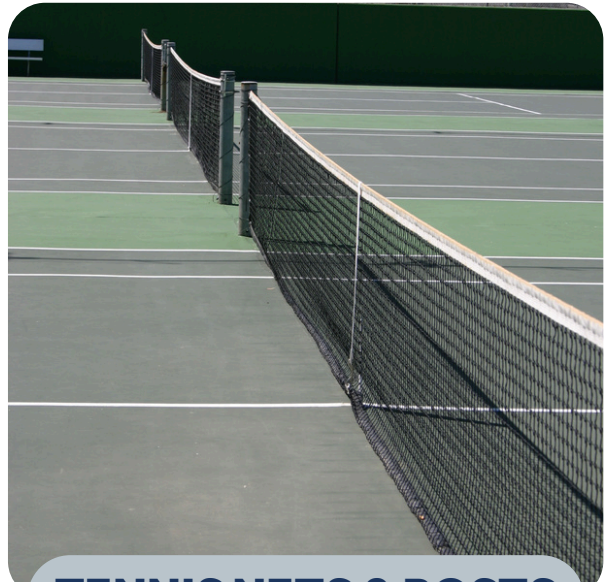
EASY SETUP

Our Windscreens are designed for quick, hassle-free installation and removal whenever you need it.

SEVERAL COLOR OPTIONS

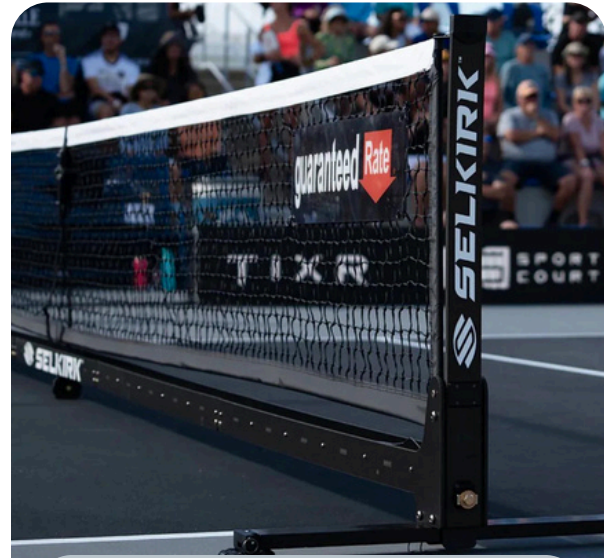
With multiple color options, our Windscreens let you tailor the look to your team, school, or facility.

ACCESSORIES & INSTALLATION TOOLS



TENNIS NETS & POSTS

Designed to meet standard specifications while delivering reliable tension and a crisp net profile suitable for competitive & recreational play



PICKLEBALL NETS

Choose between Portable Pickleball Nets for quick setup, or Permanent Pickleball Net/Posts for a long-lasting, professional installation.



SQUEEGEES

Built for professional surface prep and paint application, these tools ensure smooth coatings, sharp lines, and durable performance



SCRAPERS & MIXERS

Engineered for surface prep and mixing tasks, these tools deliver precision, durability, and consistent results for professional coating applications.



& MORE

Essential for storage, prep, and cleanup, these Tools ensure safe handling, surface protection, and reliable containment of coatings and materials.

PROUD DISTRIBUTOR

DOMINATOR

SELKIRK

BEYOND THE *SURFACE*



At AT Sports, our commitment to excellence goes far beyond the products...We're your trusted partner. Our team provides hands-on support to help you win projects, streamline installs, and deliver unmatched results to your clients.

DESIGN & ESTIMATE SUPPORT

Design your dream court with our intuitive court designer, and plan your project using our paint calculator.

SALES & MARKETING TOOLS

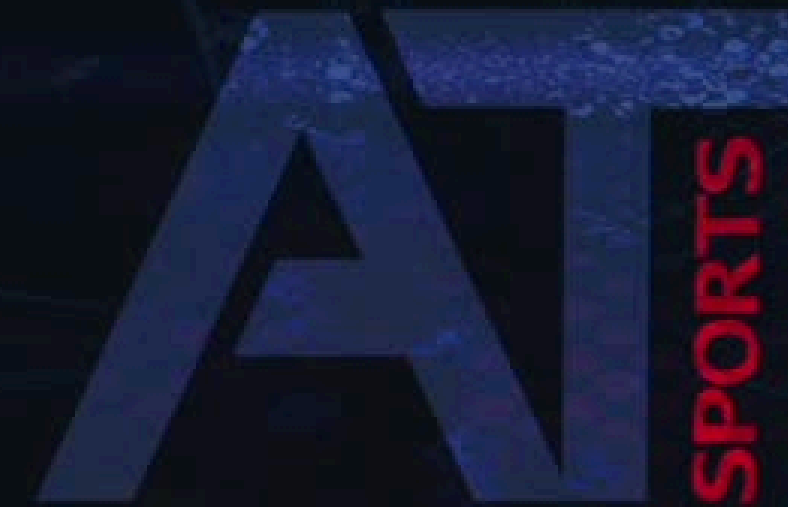
Access branded product sheets, system visuals, and co-branded assets to help you pitch and close more jobs.

DEDICATED ACCOUNT MANAGER

Work with a court expert who understands your region, your timelines, and your needs—start to finish.

PRODUCT & INSTALL GUIDANCE

Get technical documentation, system comparisons, and expert insight to align each project with the right surface.



JUST PLAY. ON IT.



CONNECT WITH US



Phone Number

0508 872 268



Unit 42b Porana Road Wairau Valley
Auckland New Zealand



Website

www.urbanturfsolutions.co.nz